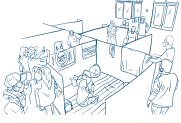


NINE INNOVATORS OF THE FIRST IDEAKSI



CIQAL FOUNDATION



establishes the Wukirsari Village as the sister village of Kepuharjo to be prepared for Merapi eruptions and ensure an inclusive evacuation process.

DIFAGANA DIY



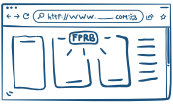
develops DIFGANDES, an inclusive disaster mitigation application, as a medium for education, outreach, and support for disaster emergencies and evacuation of at-risk groups.

PB PALMA UNIT OF GKJ AMBARRUKMA



conducts an effective and inclusive emergency response to the Gadjah Wong River flood in 5 sub-villages in the Caturtunggal Village, collaborating with river communities.

GUNUNGKIDUL DRR FORUM



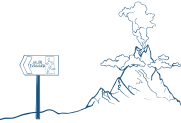
provides an inclusive digital discussion platform on DRR for persons with disabilities due to the vast area of Gunungkidul.

LINGKAR ASSOCIATION



develops an early warning system and inclusive evacuation plan for the eruption of Merapi in Girikerto Village, Turi, Sleman.

MERAPI RESCUE COMMUNITY



introduces a visual- (light) and audio- (sound) based self-evacuation system as an eruption disaster mitigation around Merapi.

NGUDI MULYA FARMERS' GROUP



makes it easy for older farmers and persons with disabilities to access water for agricultural irrigation so that they are better prepared to face drought.

WINONGO ASRI COMMUNICATION FORUM



develops waste management with black soldier fly larvae or Maggot and Maggotbox to increase community participation in organic waste management in urban Jogja.

SEKOCI SASANA INSPIRA



initiates a host family system for persons with disabilities to overcome the problem of disability-friendly evacuation access in the event of a disaster.

Funded by



elrha



START
NETWORK

